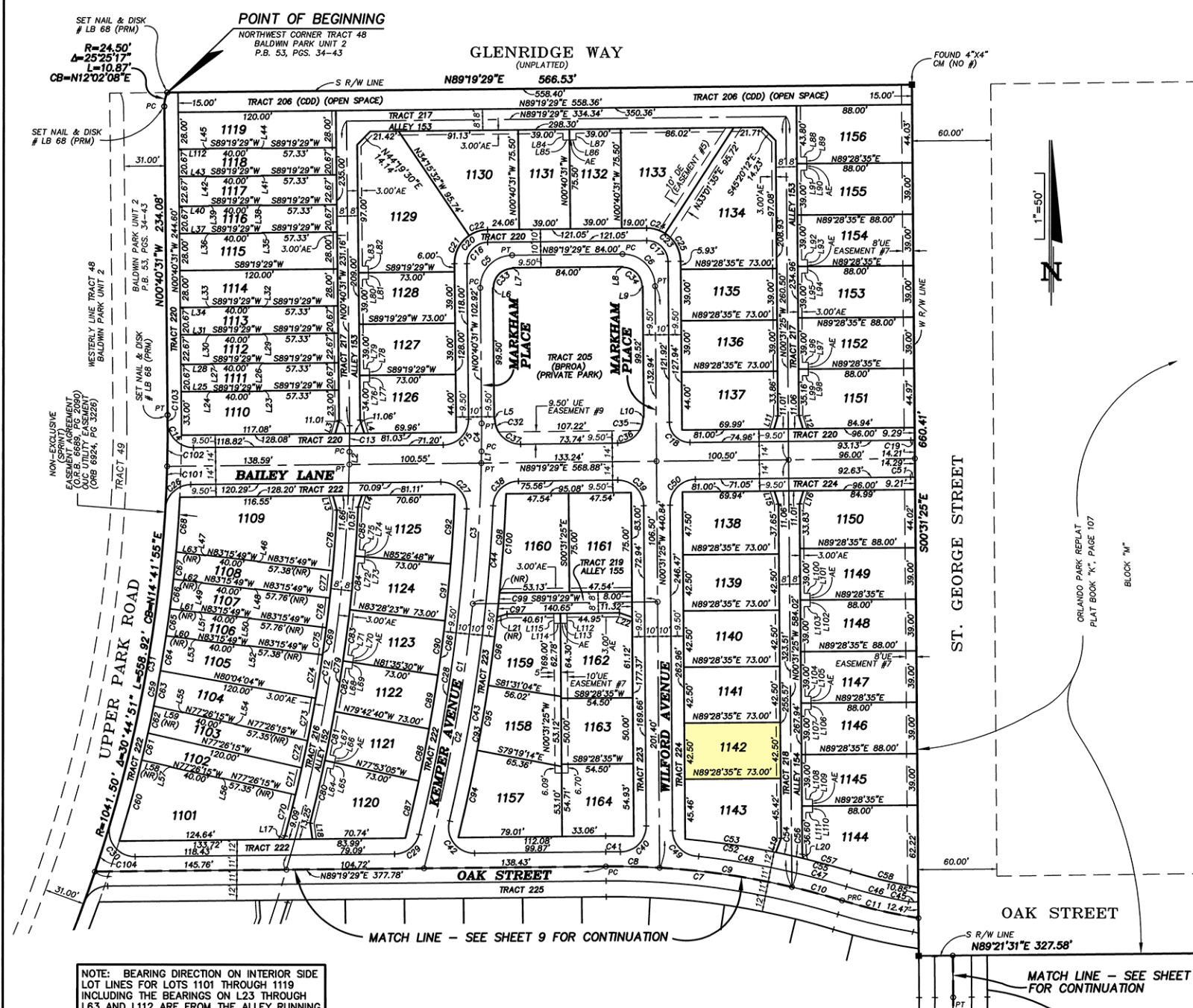
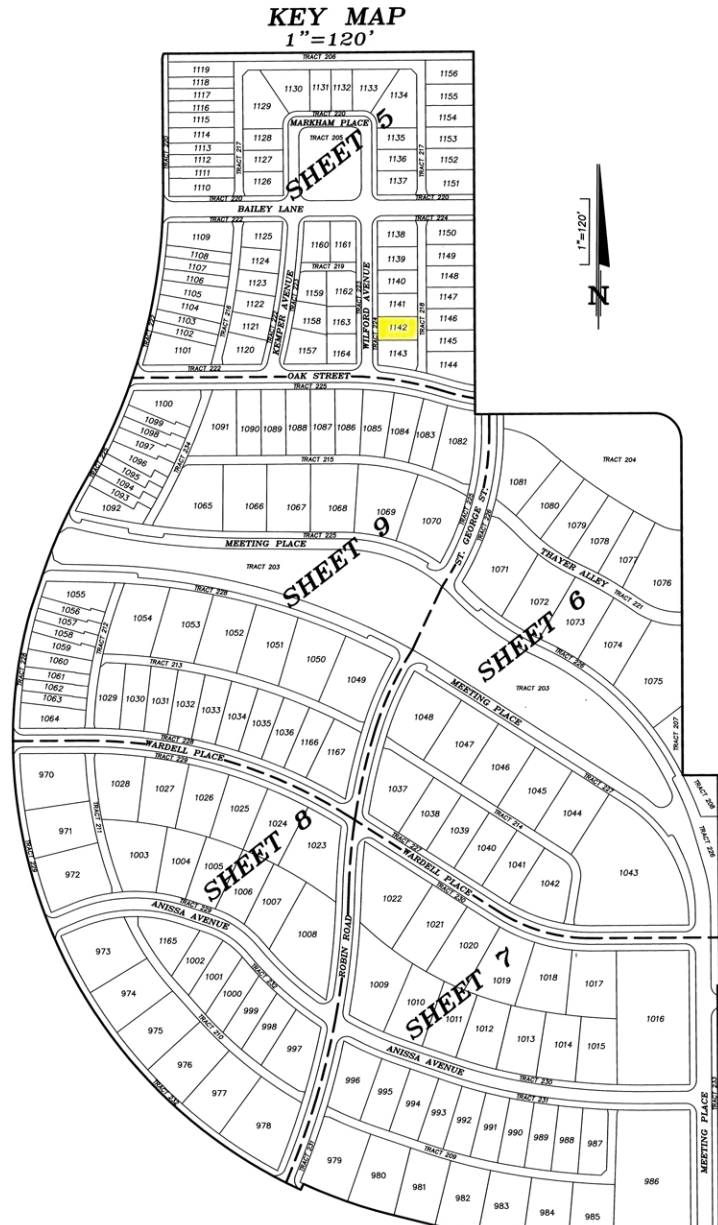


BALDWIN PARK UNIT 6

A REPLAT OF A PORTION OF ORLANDO PARK REPLAT, PLAT BOOK K, PAGE 107,
 A REPLAT OF A PORTION OF A REVISION OF OAKHURST, PLAT BOOK H, PAGE 114 AND
 A REPLAT OF A PORTION OF BALDWIN PARK UNIT 2, PLAT BOOK 53, PAGES 34 THROUGH 43
 CITY OF ORLANDO, ORANGE COUNTY, FLORIDA
 LYING IN SECTION 17, TOWNSHIP 22 SOUTH, RANGE 30 EAST

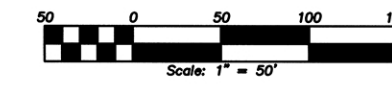
PLAT BOOK **57** PAGE **5**
 SHEET 5 OF 9



CURVE TABLE					LINE TABLE			
NUMBER	RADIUS	DELTA	LENGTH	CHORD	CHORD BEARING	NUMBER	BEARING	DISTANCE
C1	1280.50	1354.28*	310.82	310.08	N08°01'11"E	L1	N01°03'57"E	8.82'
C2	1280.50	09°07'43"	204.02	203.80	N10°24'33"E	L2	N01°25'51"E	9.56'
C3	1280.50	04°46'44"	106.80	106.77	N03°27'19"E	L3	N16°12'26"E	10.46'
C4	700.00	01°44'28"	21.27	21.27	N00°11'43"E	L4	N17°33'24"E	10.45'
C5	24.50	90°00'00"	38.48	38.46	N44°19'29"E	L5	N89°19'29"E	0.50'
C6	24.50	90°09'05"	38.55	38.49	S45°35'58"E	L6	N89°19'48"E	0.50'
C7	595.50	13°43'45"	142.69	142.35	S83°48'38"E	L7	N00°40'31"E	0.50'
C8	595.50	03°36'08"	40.80	40.80	S88°42'27"E	L8	S00°40'31"E	0.50'
C9	595.50	09°47'37"	101.79	101.66	S81°50'54"E	L9	N89°19'35"E	0.50'
C10	595.50	03°47'39"	39.44	39.43	S75°02'56"E	L10	S89°24'10"E	0.50'
C11	427.00	08°00'22"	59.67	59.62	S77°09'18"E	L11	N16°16'58"E	10.41'
C12	1180.00	15°07'52"	311.62	310.72	N08°46'47"E	L12	N17°28'31"E	10.50'
C13	800.00	01°53'22"	18.79	18.78	N00°16'10"E	L13	S15°45'03"E	11.53'
C14	19.50	90°17'31"	30.73	27.65	S45°31'45"E	L14	S17°55'15"E	9.41'
C15	19.50	90°00'00"	30.63	27.59	N44°19'29"E	L15	S17°28'25"E	10.10'
C16	16.00	89°57'08"	25.12	22.62	N44°18'04"E	L16	S16°18'31"E	10.40'
C17	16.00	90°09'05"	25.18	22.66	S45°35'58"E	L17	N29°30'37"E	2.99'
C18	15.50	90°09'06"	24.39	21.95	S45°35'58"E	L18	N07°58'52"E	12.30'
C19	19.50	08°28'11"	2.88	2.88	N85°05'23"E	L19	N20°24'18"E	11.32'
C20	25.50	90°00'00"	40.06	38.06	N44°19'29"E	L20	N14°34'00"E	3.21'
C21	25.50	58°23'24"	25.10	24.10	N27°31'12"E	L21	N17°25'58"E	7.91'
C22	25.50	33°36'36"	14.96	14.74	N72°31'12"E	L22	S17°28'25"E	10.10'
C23	25.50	90°09'05"	40.12	36.11	S45°35'58"E	L23	S00°40'31"E	0.33'
C24	25.50	33°04'46"	14.72	14.52	S74°08'08"E	L24	N00°40'31"E	0.33'
C25	25.50	57°04'19"	25.40	24.36	S29°03'35"E	L25	S89°19'29"E	22.67'
C26	19.50	86°05'13"	29.30	26.62	N46°16'53"E	L26	N00°40'31"E	0.33'
C27	19.50	03°19'05"	31.76	28.36	S44°00'58"E	L27	S00°40'31"E	0.33'
C28	129.00	11°15'41"	248.71	249.31	N89°19'29"E	L28	S89°19'29"E	22.67'
C29	19.50	75°25'15"	25.67	23.86	S51°36'52"E	L29	S00°40'31"E	0.33'
C30	19.50	107°15'55"	36.51	31.40	N37°02'33"W	L30	N00°40'31"E	0.33'
C31	1041.50	13°21'08"	242.71	242.16	N09°54'50"E	L31	S89°19'29"E	22.67'
C32	19.50	30°51'07"	10.50	10.37	N16°06'04"E	L32	N00°40'31"E	0.33'
C33	14.50	90°00'00"	22.78	20.51	N44°19'29"E	L33	S00°40'31"E	0.33'
C34	14.50	90°09'06"	22.81	20.53	S45°35'58"E	L34	S89°19'29"E	22.67'
C35	19.50	30°42'02"	10.45	10.32	S14°49'35"E	L35	S00°40'31"E	0.33'
C36	19.50	59°08'53"	20.13	19.25	S59°45'03"E	L36	N00°40'31"E	0.33'
C37	19.50	59°08'53"	20.13	19.25	N61°06'04"E	L37	S89°19'30"E	22.67'
C41	806.50	01°02'55"	11.10	11.01	S89°50'57"E	L38	N00°40'31"E	0.33'
C42	19.50	103°54'33"	35.36	30.71	N38°43'14"E	L39	S00°40'31"E	0.33'
C43	1290.50	07°25'03"	167.07	166.25	N89°30'10"E	L40	S89°19'29"E	22.67'
C44	1290.50	03°18'03"	74.35	74.34	N04°08'37"E	L41	S00°40'31"E	0.33'
C45	19.50	21°33'48"	7.34	7.30	S89°19'29"E	L42	N00°40'31"E	0.33'
C46	416.00	06°44'07"	48.90	48.87	N76°31'10"E	L43	S89°19'29"E	22.67'
C47	416.00	04°02'42"	42.82	42.81	N75°10'28"E	L44	N00°40'31"E	0.33'
C48	606.50	06°47'12"	71.84	71.80	N80°35'25"E	L45	S00°40'31"E	0.33'
C49	19.50	83°41'24"	28.46	26.02	N42°22'08"W	L46	N06°44'11"E	0.33'
C50	19.50	89°50'55"	30.58	29.54	N04°24'02"E	L47	S06°44'11"E	0.33'
C51	19.50	09°57'14"	3.39	3.38	S85°41'53"E	L48	S06°44'11"E	0.33'
C52	618.50	07°36'30"	82.13	82.07	S81°55'51"E	L49	N06°44'11"E	0.33'
C53	618.50	06°27'56"	69.79	69.76	S81°50'08"E	L50	N06°44'11"E	0.33'
C54	618.50	01°08'34"	12.34	12.34	S78°01'54"E	L51	S06°44'11"E	0.33'
C55	618.50	04°18'30"	46.51	46.50	S75°18'22"E	L52	S06°44'11"E	0.33'
C56	618.50	09°50'11"	8.03	8.03	S77°02'31"E	L53	N06°44'11"E	0.33'
C57	618.50	03°28'19"	37.48	37.47	S74°53'16"E	L54	N12°33'45"E	0.33'
C58	404.00	07°28'03"	52.65	52.62	S76°53'08"E	L55	S12°33'45"E	0.33'
C59	1052.00	14°26'45"	265.24	264.54	N09°56'54"E	L56	S12°33'45"E	0.33'
C60	1052.00	03°27'53"	63.62	63.61	N15°26'19"E	L57	N12°33'45"E	0.33'
C61	1052.00	01°08'38"	21.00	21.00	N13°08'04"E	L58	N77°26'15"E	22.67'
C62	1052.00	01°08'38"	21.00	21.00	N11°59'26"E	L59	N77°26'15"E	22.67'
C63	1052.00	01°29'12"	26.67	26.67	N09°14'00"E	L60	N83°15'49"E	22.67'
C64	1052.00	01°27'10"	26.67	26.67	N09°12'21"E	L61	N83°15'49"E	22.67'
C65	1052.00	01°07'33"	20.67	20.67	N07°54'59"E	L62	N83°15'49"E	22.67'
C66	1052.00	01°14'04"	22.67	22.67	N06°44'11"E	L63	N83°15'49"E	22.67'
C67	1052.00	01°07'33"	20.67	20.67	N05°33'22"E	L64	N77°33'05"E	5.00'
C68	1052.00	02°16'04"	41.64	41.64	N03°51'33"E	L65	S12°06'55"E	5.00'
C69	1172.00	12°14'19"	250.34	249.87	N09°02'28"E	L66	N12°06'55"E	5.00'
C70	1172.00	01°34'16"	32.71	32.71	N14°22'29"E	L67	N73°33'05"E	5.00'
C71	1172.00	01°01'36"	21.00	21.00	N13°04'33"E	L68	N81°35'50"E	5.00'
C72	1172.00	01°36'13"	32.80	32.80	N10°44'03"E	L69	S08°24'30"E	5.00'
C73	1172.00	01°37'53"	33.37	33.37	N09°07'00"E	L70	N08°24'30"E	5.00'
C74	1172.00	01°00'38"	20.67	20.67	N07°47'44"E	L71	N81°35'50"E	5.00'
C75	1172.00	01°06'29"	22.67	22.67	N06°44'11"E	L72	N85°26'48"E	5.00'
C76	1172.00	01°00'38"	20.67	20.67	N05°40'37"E	L73	S04°33'12"E	5.00'
C77	1172.00	02°15'00"	46.02	46.02	N04°02'48"E	L74	N04°33'12"E	5.00'
C78	1172.00	01°41'39"	242.47	242.05	N08°36'49"E	L75	N85°26'48"E	5.00'
C79	1188.00	02°20'48"	48.66	48.65	N13°17'15"E	L76	S89°19'29"E	5.00'
C80	1188.00	02°01'26"	44.54	44.54	N13°07'34"E	L77	S00°40'31"E	5.00'
C81	1188.00	01°49'32"	40.18	40.17	N11°12'06"E	L78	N00°40'31"E	5.00'
C82	1188.00	01°52'52"	39.00	39.00	N09°20'54"E	L79	S89°19'29"E	5.00'
C83	1188.00	01°52'52"	39.00	39.00	N07°28'02"E	L80	S89°19'29"E	5.00'
C84	1188.00	01°58'23"	40.91	40.91	N05°32'25"E	L81	S00°40'31"E	5.00'
C85	1188.00	01°47'14"	37.06	37.06	N03°39'37"E	L82	N00°40'31"E	5.00'
C86	1261.00	11°58'37"	263.59	263.11	N08°08'59"E	L83	S89°19'29"E	5.00'
C87	1261.00	02°01'26"	44.54	44.54	N13°07'34"E	L84	N00°40'31"E	5.00'
C88	1261.00	01°49'32"	40.18	40.17	N11°12'06"E	L85	S89°19'29"E	5.00'
C89	1261.00	01°52'52"	39.00	39.00	N09°20'54"E	L86	N89°19'29"E	5.00'
C90	1261.00	01°52'52"	39.00	39.00	N07°28'02"E	L87	N00°40'31"E	5.00'
C91	1261.00	01°58'23"	43.42	43.42	N05°32'25"E	L88	S89°19'29"E	5.00'
C92	1261.00	02°23'33"	52.66	52.65	N03°21'27"E	L89	N00°40'31"E	5.00'
C93	1300.00	07°56'15"	180.09	179.95	N09°42'55"E	L90	S00°31'25"E	5.00'
C94	1300.00	02°58'58"	67.66	67.67	N12°11'34"E	L91	S89°19'29"E	5.00'
C95	1300.00	01°52'09"	49.98	49.97	N09°36'00"E	L92	S89°19'29"E	5.00'
C96	1300.00	02°17'54"	52.15	52.15	N07°20'58"E	L93	N00°31'25"E	5.00'
C97	1300.00	00°27'13"	10.29	10.29	N05°58'24"E	L94	S00°31'25"E	5.00'
C98	1300.00	03°40'14"	63.28	63.27	N03°54'41"E	L95	S89°19'29"E	5.00'
C99	1300.00	00°21'17"	8.05	8.05	N05°34'09"E	L96	S89°19'29"E	5.00'
C100	1300.00	03°18'57"	75.23	75.22	N03°44'02"E	L97	N00°31'25"E	5.00'
C101	1041.50	01°46'20"	32.21	32.21	N02°21'06"E	L98	S00°31'25"E	5.00'
C102	1041.50	01°50'56"	33.61	33.61	N00°32'28"E	L99	S89°19'29"E	5.00'
C103	1041.50	00°17'31"	5.30	5.30	N00°31'45"W	L100	S89°19'29"E	5.00'
C104	1041.50	02°06'11"	38.23	38.22	N17°38'30"E	L101	S00°31'25"E	5.00'
						L102	S00°31'25"E	5.00'
						L103	S89°19'29"E	5.00'
						L104	S89°19'29"E	5.00'
						L105	N00°31'25"E	5.00'
						L106	S00°31'25"E	5.00'
						L107	S89°19'29"E	5.00'
						L108	S89°19'29"E	5.00'
						L109	N00°31'25"E	5.00'
						L110	S00°31'25"E	5.00'
						L111	S89°19'29"E	5.00'
						L112	S89°19'29"E	22.67'

NOTE: BEARING DIRECTION ON INTERIOR LOT LINES FOR LOTS 1101 THROUGH 1119 INCLUDING THE BEARINGS ON L23 THROUGH L63 AND L112 ARE FROM THE ALLEY RUNNING TOWARD UPPER PARK ROAD.

NOTICE: THIS PLAT, AS RECORDED IN ITS GRAPHIC FORM, IS THE OFFICIAL DEPICTION OF THE SUBDIVIDED LANDS DESCRIBED HEREIN AND WILL IN NO CIRCUMSTANCES BE SUPPLANTED IN AUTHORITY BY ANY OTHER GRAPHIC OR DIGITAL FORM OF THE PLAT. THERE MAY BE ADDITIONAL RESTRICTIONS THAT ARE NOT RECORDED ON THIS PLAT THAT MAY BE FOUND IN THE PUBLIC RECORDS OF THIS COUNTY.



PREPARED BY: **DONALD W. McINTOSH ASSOCIATES, INC.**
 ENGINEERS PLANNERS SURVEYORS
 2200 PARK AVENUE NORTH, WINTER PARK, FLORIDA 32789 (407) 844-4088
 CERTIFICATE OF AUTHORIZATION NUMBER L888